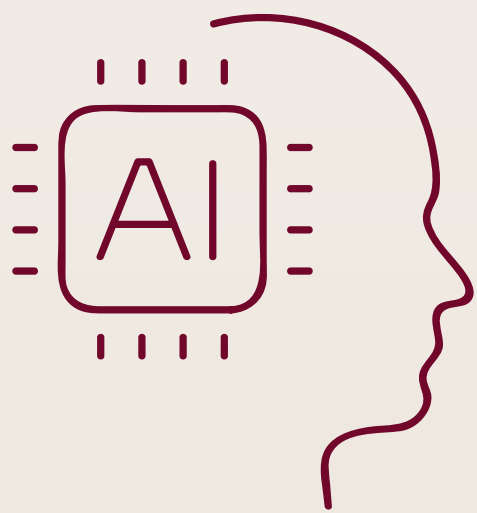


The NHS embraces AI to drive progress and transform patient care

Shaping the future together

The NHS is harnessing AI to empower its workforce and transform healthcare delivery for a better tomorrow.



68%

of NHS departments are integrating AI technologies into their operations, revolutionising patient care and efficiency.



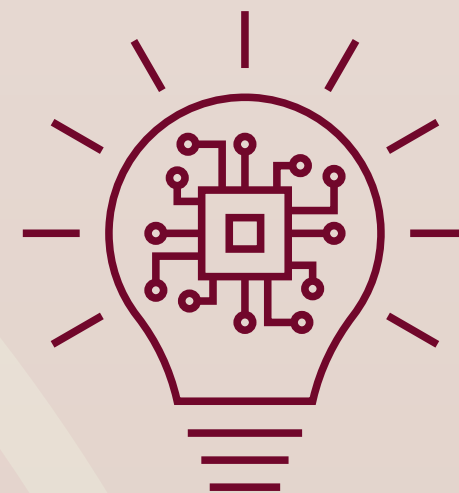
67%

of NHS decision-makers in HR, technology and data report positive staff attitudes toward AI adoption, paving the way for smoother transitions.



42%

of NHS trusts are prioritising efforts to enhance employee capabilities in AI, ensuring a future-ready workforce.



38%

of NHS trusts are adopting AI technologies to stay at the forefront of healthcare innovation.



36%

of NHS decision-makers in HR, technology and data are rolling out AI training programmes to equip staff with the skills needed for this rapidly evolving landscape.

Discover why a Corndel apprenticeship can help address the NHS digital skills gap.

[Find out more here](#)

